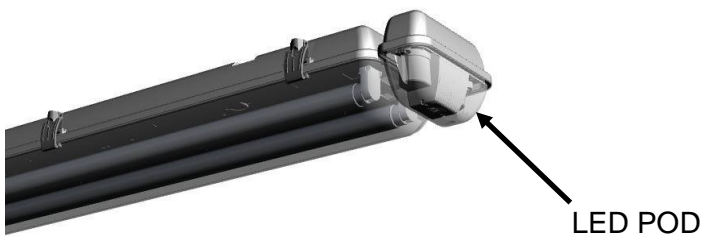




Supplementary Maintenance Instruction

L10 Sustained Weatherproof Emergency Battens

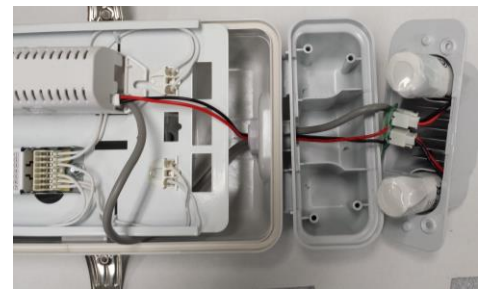
Weather Proof Battens – Battery and LED Replacement



LED POD location on batten



LED POD cover removed.



LED Head and Batteries

SPARES

LED Head L10 Batten: P/N: 1100640

Battery L10 3.3V, 2.5Ah P/N: 1530050

BATTERY REPLACEMENT

1. Remove the LED POD cover screws.
2. Remove the POD cover.
3. Remove the LED POD screws and assembly.
4. Disconnect battery from the interface PCB.
5. Install new batteries as required.
6. Reinstall the LED POD assembly and screws
7. Reinstall the POD cover and screws..

Battery replacement can be performed without interrupting power to the fitting

LED REPLACEMENT

1. Remove the batten diffuser.
2. Remove the lamp tubes.
3. Remove the batten gear tray.
4. Disconnect the LED cable from the Lifelight Pack.
5. Remove the LED POD cover screws and cover.
6. Remove the LED POD module.
7. Remove the LED head and cable.
8. Install the new LED and cable.
9. Reinstall the POD cover.

For lamp head replacement, power MUST be removed from the fitting

Important:

It is illegal for anyone, except for a licensed electrician to install or maintain this product. Before installation, ensure that the electricity supply has been switched off and isolated. Installation must be carried out in accordance with the relevant Australian and International Standards.